

PostScript



OUSGGers Accused of
Human Rights Abuses

Hilary Term 2008 - Issue 2 of 3

An Oxford University Scout and Guide Group Publication

PostScript



Issue 389

Editor: Elizabeth Horne, St. Edmund Hall

Chair: Elizabeth Horne, St. Edmund Hall

Chair-Elect: Timothy Driscoll, Oriel

Treasurer: Sarah Harvey, St. Catherine's

Secretary: Michael Howe, Worcester

SSAGO Rep.:

Christopher Wood, St. Edmund Hall

Membership Secretary:

Michelle Barton, St. Edmund Hall

Internet Officer: Jude Owes, Oxford Brookes

SAGLO: James Baker, New

Quartermaster: David Keiller, Keble

N'n'N: James Baker, New

Easter Activity Organiser:

Elizabeth Horne, St. Edmund Hall

Annual Dinner Organiser:

Chris Wood, St. Edmund Hall

Old Members' Rep.: Chris Seward, Ex-Jesus

Senior Member: Gavin Williams, St. Peter's

Any correspondence or articles for submission should be e-mailed to postscript@ousgg.org.uk, or may be sent to Miss E. Horne, St. Edmund Hall, Queen's Lane, Oxford, OX1 4AR.

All items received will be presumed for publication unless otherwise notified. The Editor reserves the right to modify contributions.

Views expressed in *PostScript* are those of their authors, and may not correspond to those of OUSGG and associated bodies or limbs.

It's alright to scream. I'm screaming too.

Cover photograph courtesy of Elizabeth Horne.

Printed and published in Oxford.

© 2008 Oxford University Scout & Guide Group.
All rights reserved.

Editorial

We're halfway through Hilary already, and hence halfway through my time as PostScript Editor. Where does the time *go*?

Not into writing articles. It seems that my pleas for fewer co-authored articles have spectacularly backfired, with only one non-regular full-length article being submitted before deadline (or, indeed, after it).

There's only so much padding I can do, so unless a few more people pen articles for the next issue I shall be forced - very reluctantly, of course - to take Jude up on her offer of writing some OUSGG Slash fiction to plump up the next issue. We already have some suitably unsuitable photographs to accompany such a feature.

Given that the group's gender bias is heavily male, and that Jude and I are both female, the odds are good that it will hurt you, the reader, far more than it does me.

Think on it.

Elizabeth Horne, St. Edmund Hall - Editor

The next issue of PostScript will be published on

Monday of 8th Week,

and so the deadline is

Friday of 7th Week.

Articles received after this time will be included at the Editor's discretion, or may be retained for use in future issues.

Chair's Report

Elizabeth Horne continues her beatific reign of terror.

All groovy?

Judging by the occasional glimpses I caught of the main body of OUSGG members at our trip to see British Sea Power play live, snatched in those fleeting interludes when I felt secure enough to risk looking backwards while entrenched in the mosh pit, everyone seemed to enjoy their evening.

Erik's Pancake Party was incredibly well attended and a roaring success, despite severe underestimation of the quantities of eggs required, and then an equally large overestimation of eggs required in the ensuing emergency trip to Tesco's. It was heartening to see so many people finally embrace the culinary delights of cheese and Branston pickle pancakes. I no longer am a misunderstood lone nutcase: I am a nutcase in the company of others.



Don't forget to leave room in your diaries for the Thinking Day bar crawl at the end of 6th week, which promises to be a night to remember. I for one shall certainly be recalling it with a good deal of clarity, since unfortunate timetabling now means I will be unable to drink. Non-drinking OUSGGers are heartily encouraged to come and join me for a parallel soft drink crawl.

Next week we'll be putting human endurance and ingenuity to the test with an evening of amazement, and in 7th week we'll be killing each other.

It's been nice knowing you.

Elizabeth Horne, St. Edmund Hall

Inside This Issue

Intimidating prehistoric biota rendered into more friendly two dimensional cladograms.

- **Natural Background Pancake Fluctuations and Anthropogenic Influences on Batter Consistency in the Pleistocene.**
- **Easter Activity 2008**
Sign up now for your chance to take part in the inevitable in-joke carousel.
- **Are You In a Cult?**
Those early warning signs in full.
- **QuoteScript**
Somebody - anybody - please take Mr. Cartey's notebook away.
- **Navigational Amendment**
Update your compass before the switchover!

NATURAL BACKGROUND PANCAKE FLUCTUATIONS AND ANTHROPOGENIC INFLUENCES ON BATTER CONSISTENCY IN THE PLEISTOCENE

NICHOLAS SCROXTON¹

¹Department Of Confectionary Analysis, Tesco's, OX4 9TJ

ABSTRACT: Isotopic studies of annual rings in planktonic scouts show a variety of pancake batter techniques. Due to resolution limitations in albumen sampling, the egg concentration has traditionally been calculated using linear scaling properties from Winter Walking breakfast foraminifera. Records from the ERIK 2 Ice Core appears to show an anthropogenic signal superimposed on top. Raised chlorofluorocarbon concentrations in the 1980s are the current accepted method of modern high vitellus concentrations. In this paper we discuss new evidence from sediment cores from the ephemeral Oxford lake, which reveal high vitellus concentrations may, in fact, be pervasive throughout the Pleistocene and that subsequent leaching through hydrothermal alteration is the likely cause of the current values seen in the literature. We go on to suggest that egg concentration in high quality pancake batter should in fact be considered to be as much as double that proposed in the influential paper by M. Barton in 2006.

INTRODUCTION

Consistent pancake production has been a source of consternation among OUSGers for many years now. Following the Teddy Hall Inundation Event (THIE) of 2005 a particularly wide variety of pancake styles have been on offer to the group at the now customary celebration of Erik's birthday, occurring on the Monday before Shrove Tuesday every year. These range from the traditional curtain raiser of curried pancake - following slack washing-up techniques on the available frying pans - to pancakes which resemble prawn crackers, both in consistency and colour. Consistency, ingredient proportions and cooking methods have all varied and evolved over the years, with proto-rifting of pancake crust finally achieved in the Oriel College labs on Rectory Road in 2008.

Following on from the great "milk vs. milk and water" debate of the nineties, current topical debate in the pancake sciences is that of egg concentrations. Here we put to the test the one egg or two per batch hypothesis using rigorous and extensive testing of a new GCPM (General Circulation Pancake Model) at the Hadley Centre, Exeter.

METHODOLOGY

Preliminary work has already been carried out in this field by Barton (2006). Whilst we disagree with Barton's values, we recognise the value of the Liverpoolian creaming technique of creating smooth pancake batter. Following rejection of the Horne whisking method after several clinical trials went drastically wrong, the Barton method of not adding milk until a smooth paste has been created allowed much needed advances in pancake smoothness. Further additions to this method have been suggested by Wood (2006) with the introduction of blending techniques borrowed from the scientific discipline of creating biscuits on a George Foreman grill (Wood 2007). In this paper we believe that whilst such techniques do lead to a more consistent and creamy batter, the blending stage of batter formation is unnecessary if suitable care is taken upon flour addition.

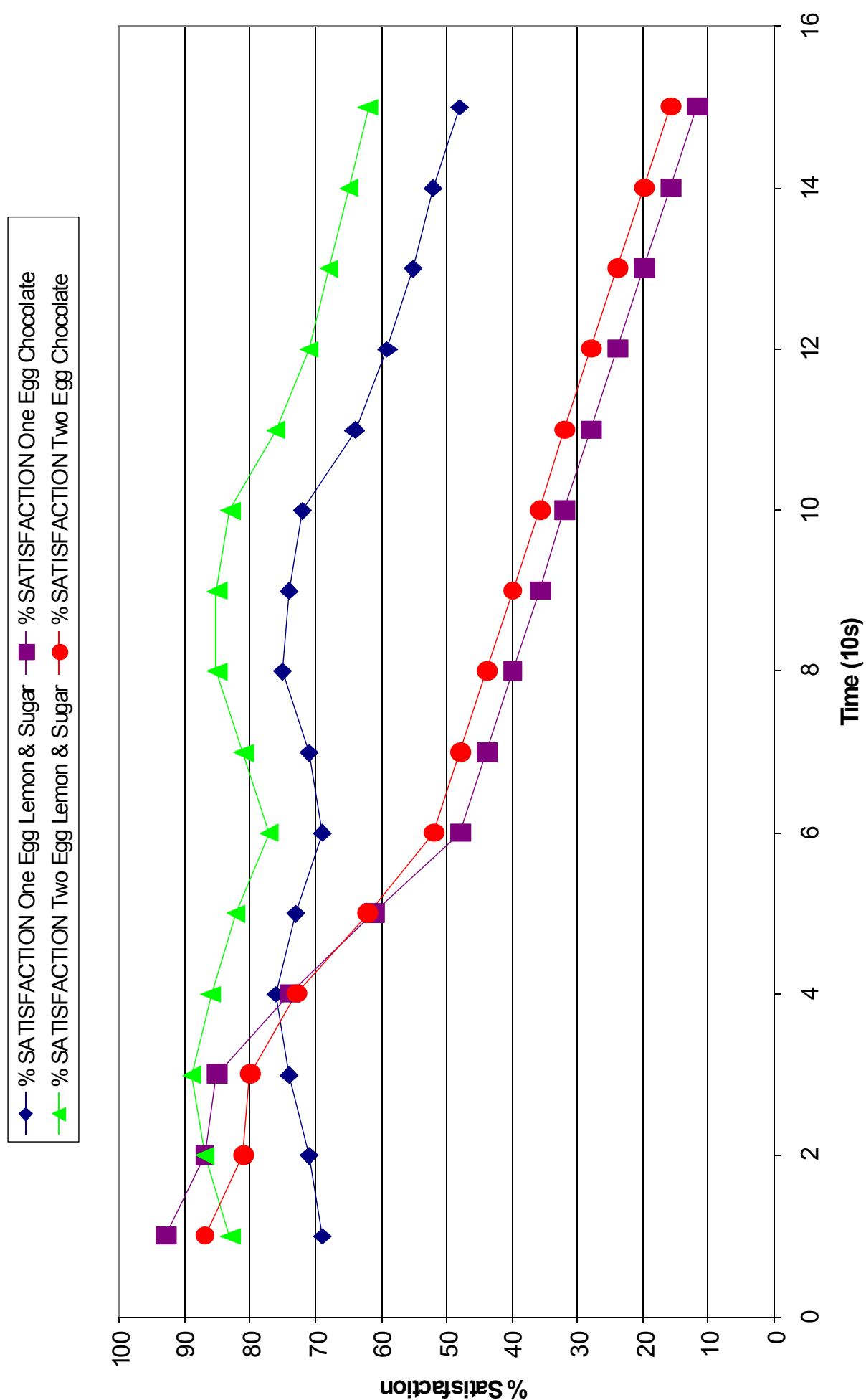
A Luke Cartey Mark III, v. 4.2, GCPM was used to test the resultant pancakes. We used the Barton method on the first day before giving the model 24 hours rest - usually enough time for the exponential pancake desire curve to reach a value close enough to zero. The experiment was repeated the following day using the Delia Smith "It had Limes" method (Smith 1995). Toppings were held constant for both evenings with the model experiencing several runs. The Cartey satisfaction index was used to judge the quality of pancakes resulting from a variety of egg concentrations. Results were set against the standard Cartey baseline (Cartey & Howe 2006) with Jaffa Cake desire index set at 2.3, and we applied the Horne/Snelson algorithm (Horne & Snelson 2007) to remove any relationship bias that Luke may have been subjected to at the time.

We used the two standardised pancake toppings of classic lemon & sugar and freshly melted chocolate, and recorded the % satisfaction from the GCPM for the first 15 units of time in the model (one unit equalling approximately ten seconds). Initial pancake encounter was timed at t=0. The model was run several times to obtain average values. In her 2006 paper Barton suggested that lower egg concentrations enables a greater volume of topping to be used. As a consequence, and in confidence of the two-egg model, we used Barton quantities of topping in the one-egg method and the international standard volume in the two-egg method.

RESULTS

Data was collected as follows:

Pancake satisfaction attenuation with time



TIME	% SATISFACTION			
	ONE EGG		TWO EGG	
	LEMON &		LEMON &	
	SUGAR	CHOCOLATE	SUGAR	CHOCOLATE
1	69	93	83	87
2	71	87	87	81
3	74	85	89	80
4	76	74	86	73
5	73	61	82	62
6	69	48	77	52
7	71	44	81	48
8	75	40	85	44
9	74	36	85	40
10	72	32	83	36
11	64	28	76	32
12	59	24	71	28
13	55	20	68	24
14	52	16	65	20
15	48	12	62	16

Table 1. Raw data obtained via direct Cartey GCPM experimentation.

ANALYSIS AND CONCLUSIONS

The results reveal an interesting variation between the two topping types with respect to egg concentration. In both cases the general overall trend is of a sharp peak and rapid decline in the chocolate topping and a bimodal, low amplitude but less attenuated signal from the lemon and sugar topping.

The extra topping required in the one-egg scenario gives a higher initial sense of pleasure for the chocolate topping but this signal is rapidly damped as the chocolate becomes sickeningly sweet. Research into whether small additions of coffee to the chocolate system during the melting process might help to reduce the dampening effect are ongoing. The two-egg scenario with less topping but a richer pancake produces lower initial satisfaction but a lower decline in satisfaction signal, such that overall satisfaction levels are higher once a third to half the pancake has been consumed.

The bimodal, longer lasting lemon and sugar signal shows a rather different response under testing. The two-egg model produces a greater satisfaction at all time scales than the one-egg model, typically by about 10%. This effect is blamed on the extra topping required which, in the case of the lemon and sugar, produces a flavour that is subtly too tart without the egg rich batter to balance it. This positive feedback loop could be the cause of the recent downturn in lemon and sugar levels across all pancake provinces in the East Oxford area. With two-eggs, however, the rich pancake provides ample ballast to counteract the acidity, thus producing a heightened satisfaction signal that lasts right to the end of the pancake.

We hope we have here demonstrated that the richness of pancake batter as a substitute for excess topping provides a more sustainable approach to pancake production and reduces the effect of topping leakage, known as the “pancake-failure” effect (Coates 2006), which is known to be toxic to various beneficial microbial work-surface and washing-up communities.

LIMITATIONS

This paper fails to take oil concentrations in frying pan depositional environments into account. Initial studies by Wood and Scroton (in press) reveal that lower oil levels lead to an increased risk of burning but also an increased roundness to the pancake edge. However, we believe that such limitations would have little to no effect on the GCPM with varying egg concentrations. Quantitative analysis of oil to heat ratios, and the variances that are accorded to different hob heat sources, is highly needed in the fast-developing world of batter dynamics. We suggest a multi-disciplinary approach to solving this latest conundrum, which could lead to an unprecedented shift in the way we view pancake tectonics.

REFERENCES

BARTON, M., 2006, *GCPM results of egg concentrations in pancake batter: why less egg means more topping*, Minutes of The Wirral RSPCA, vol. 143, p.564-571.

- BEDINGTON, M., 2007, *If Alistair is up, which way is out? - and other modern conundrums*, J. Faff Soc. Vol. 856, p.235-242
- CARTEY, L. & HOWE, M., 2006, *Advanced Biscuit Tectonics*, J. Biscuit Sci., Vol. 55, p.785-789
- COATES, A., 2006, *Failure: from shoes to people*, Chapter 6: *Food failure*, Emden II Publishing
- DRISCOLL, T. et al. 2007, *The advantages of extraction techniques into adjacent rooms with sensitive smoke alarms*, Oriel Journal of Building Design Vol. 32, p.1076-1102
- FREER, A. AND CARTEY, L., 2005, *A new palaeoproxy for investigating the early Toarcian Gateaux disappearance*, Winter Walking Vol. 12, p.32-43
- HAWKINS, M., 2008, *Weather prediction and the art of perspective: How clouds might not actually be coming towards you*, Winter Walking vol. 12, p.79-85
- HORNE, E., 2007, *Quotation Usage as an Indicator of OUSGG relative hilarity, sanity and morality indexes, 2003-2007*, PostScript 380, p.5-8
- HORNE, E. AND SNELSON, S., 2007, *Unreliability indexes for substation-proximal canine death omens*, J. Faff. Soc. Vol. 854, p.983-995
- OWENS, J., 2008, *Fat people: they're fun and they wobble when you hit them*, Winter Walking vol. 14. p.32-33
- SMITH, D., 1995, *Delia Smith's Winter Collection*, BBC Books
- WOOD, C. R., 2006, *Will it blend? Of course it will you stupid fecker*, Dawson Street Chronicles, vol. 12, p.23-41
- WOOD, C. R., 2007, *Biscuit Tectonics: exploring new avenues through the George Foreman technique*, Bul. Biscuit Studies, vol. 86, p.65-82

Dear OUSGGer,

You are cordially invited to attend the

OUSGG 89th Annual Dinner

On

May 3rd,

held at

Somerville College

with pre-dinner drinks from 19.30 and a four course meal at 20.00.

We will then be proceeding to the After Party (i.e. Luke and Mike).

The Punt and Picnic is to be held on May 4th from 13.00, at Parson's Pleasure (in the University Parks).

Cost:

£39 (including alcohol) or

£34 (non alcoholic drinks)

Punt and Picnic: £6

Dress is Black Tie for the dinner.

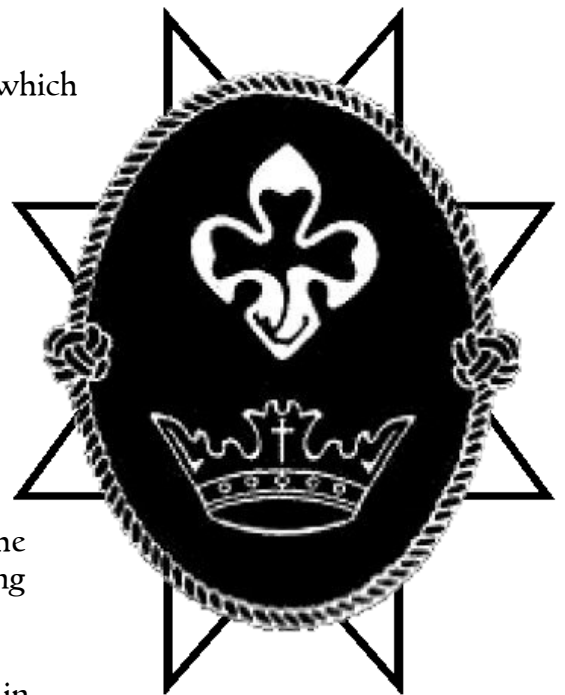
If you wish to attend please email christopher.wood@sch.ox.ac.uk to express your interest and any dietary / other requirements. Cheques for the full amount must be received by 1st April.

Are You In A Cult?

Elizabeth Horne gives us the lowdown on these potentially dangerous groups.

Cults traditionally target the emotionally vulnerable, and University students, newly moved away from the safety of their home environments, are especially at risk. Be wary of any group displaying the following characteristics:

- The group displays an excessively zealous and unquestioning commitment to its leader (whether he is alive, dead or a panda).
- Mind-altering practices (such as chanting or speaking in tongues) are used in excess and serve to suppress doubts about the group and its leader.
- The leadership dictates, sometimes in great detail, how members should think, act, and feel (for example, members must get permission to date or marry; leaders prescribe what types of stash to wear, where to live, and so forth).
- The group has a polarized us-versus-them mentality, which may cause conflict with the wider society.
- The leader is not accountable to any authorities (unlike, for example, teachers, military commanders or ministers, priests, monks, and leaders of Scout Association or Girlguiding UK groups).
- The group teaches or implies that its supposedly exalted ends justify whatever means it deems necessary. This may result in members' participating in behaviours or activities they would have considered reprehensible or unethical before joining the group (for example, lying to family or friends, collecting money for bogus charities, or embezzlement).
- The leadership induces feelings of shame and/or guilt in order to influence and/or control members. Often, this is done through peer pressure and subtle forms of persuasion.
- Subservience to the leader or group requires members to cut ties with family and friends, and radically alter the personal goals and activities they had before joining the group.
- The group is preoccupied with bringing in new members.
- Members are expected to devote inordinate amounts of time to the group and group-related activities.
- Members are encouraged or required to live and/or socialise only with other group members.
- The most loyal members (the "true believers") feel there can be no life outside the context of the group. They believe there is no other way to be, and often fear reprisals to themselves or others if they leave (or even consider leaving) the group.



Easter Activity 2008

The most fun you'll ever have in a hut.

This year's Easter Activity is being held at Bentley Copse Scout Campsite, located deep within the wildest, harshest and most unforgiving of Surrey's many bleak wildernesses. The camp will run from the 1st of April - that's a Tuesday - until the 7th, which is the Monday afterwards, and which coincidentally coincides with the start of the Easter vac for those poor unfortunate souls no longer blessed by three 8 week terms.

We will be staying in one of the site's smaller buildings, which comes fully equipped with all mod. cons. including roof, ceiling, walls etc. Cost will be £12 per night. Please R.S.V.P. as soon as possible to confirm your place on the trip!

✂

Yes! I would like to partake in this once-in-a-lifetime offer and attend **Easter Activity 2008!**

I will be joining the trip on:

- ☐ Tuesday
- ☐ Wednesday
- ☐ Thursday
- ☐ Friday
- ☐ Saturday
- ☐ Sunday

And leaving on:

- ☐ Wednesday
- ☐ Thursday
- ☐ Friday
- ☐ Saturday
- ☐ Sunday
- ☐ Monday

When shopping, please bear in mind that (tick all applicable):

- ☐ I'll eat anything, especially if it's cooked in a wok.
- ☐ I am vegetarian.
- ☐ I require lethal amounts of ketchup to be added to any meal before I can consume it.
- ☐ I consider mushrooms to be the work of the devil.
- ☐ I have other dietary requirements (please state):

.....

I will be arriving by:

- ☐ Car
- ☐ Car, and am willing to transport other members for the duration of my stay.
- ☐ Train, arriving at: ☐ Guildford Station (From Oxford, change once at Reading; direct from London Waterloo)
- ☐ Gomshall Station (From Oxford, change once at Reading)
- ☐ Bus, arriving at (please state):

.....

- ☐ I agree to adhere to the Scout Association's Child Protection code of practice, and only abuse other OUSGG members for the duration of the trip.

Name:

Date:

The OUSGG Cocktail Book

This week: Bailey's & Coke

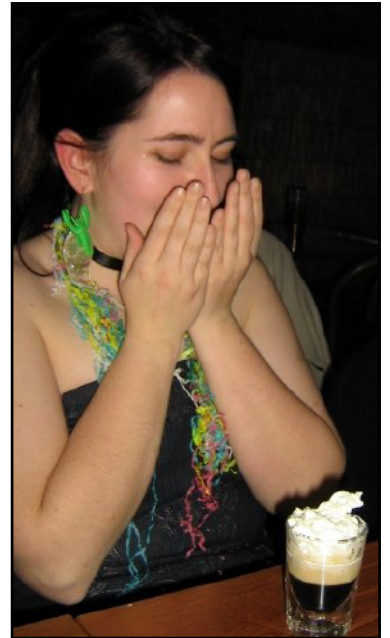
Out of orange juice - *and* lemonade? PostScript has the answer!

You will need: 1 measure Baileys
 Coke
 Healthy sense of misadventure

Pour the Baileys into a pint glass. Down. Refill the pint glass with coke. Notice how a scummy froth has formed in the glass. Feel sick.

The scum can be easily removed by scrubbing the glass, vigorously, with a scouring pad. For five minutes.

Best *not* "enjoyed".



.....

FEEL
FREE
TO
IMAGINE
THERE'S
AN
ARTICLE
HERE:
WE
WOULDN'T
WANT
YOU
TO
MISS
EASTER
ACTIVITY.

QuoteScript

Distressing out-of-context jottings liberated from **Luke Cartey's** notebook.

Luke: *(being squashed between Jude & Gillian)* I'm in the wrong position here.

Luke: *(to Lizzy)* You can now urinate outside the door.

Nick : *(being squashed by Jude and James B)* Actually, I'm quite enjoying this.

Jude: I'd be a rubbish dead person.

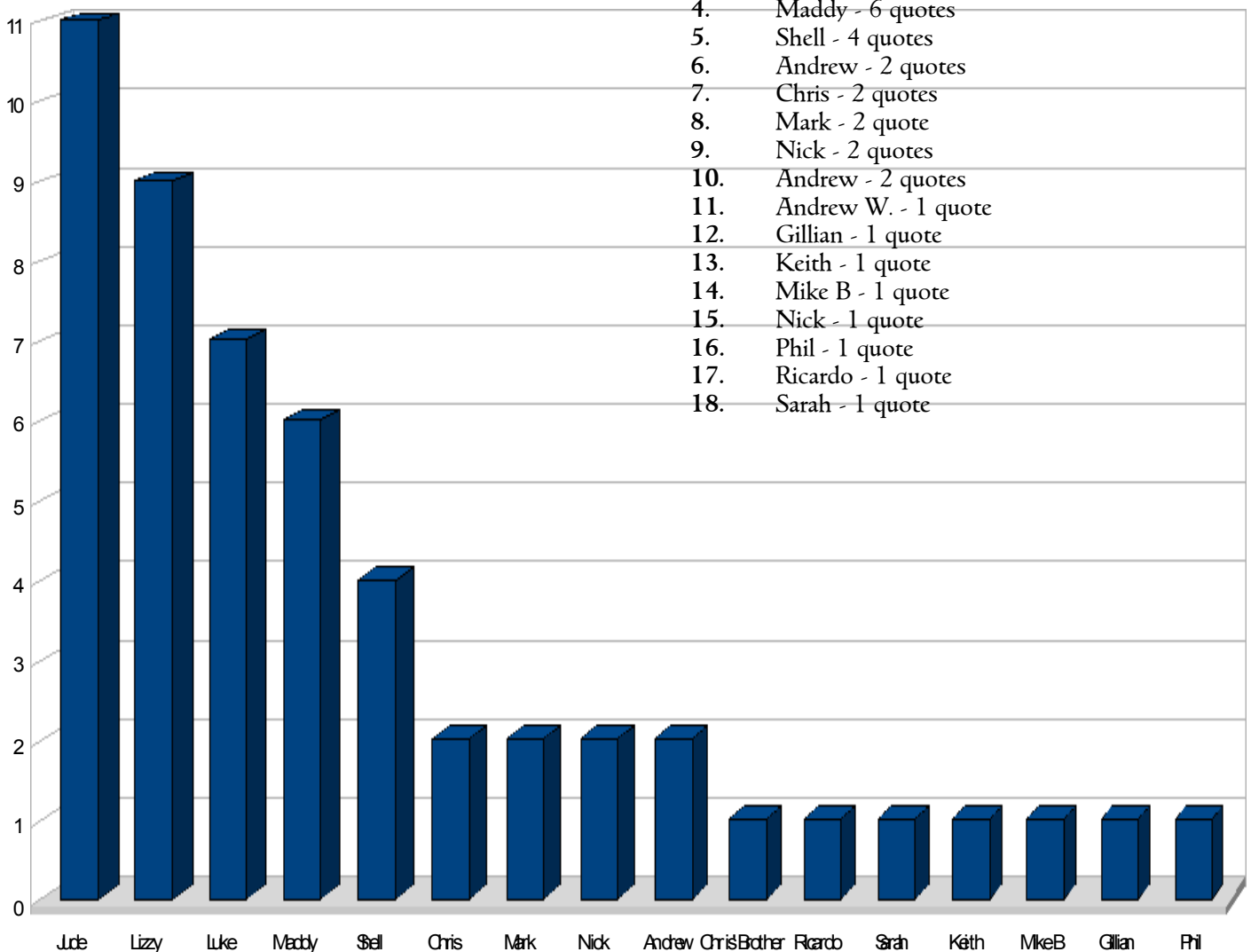
Lizzy: I wore a coat over it... every so often I'd test the waters and flash it *[makes flashing motions]*, and people would go "Ahhh!"

Luke: I'm more efficient than a handbag, because I find things within myself.

Lizzy: *(looking at Mike)* I couldn't in one sitting, but I could over a couple of goes.

1. Jude - 11 quotes

2. Lizzy - 9 quotes
3. Luke - 7 quotes
4. Maddy - 6 quotes
5. Shell - 4 quotes
6. Andrew - 2 quotes
7. Chris - 2 quotes
8. Mark - 2 quote
9. Nick - 2 quotes
10. Andrew - 2 quotes
11. Andrew W. - 1 quote
12. Gillian - 1 quote
13. Keith - 1 quote
14. Mike B - 1 quote
15. Nick - 1 quote
16. Phil - 1 quote
17. Ricardo - 1 quote
18. Sarah - 1 quote



Carve these dates into a nearby cliff face (while taking appropriate safety precautions):

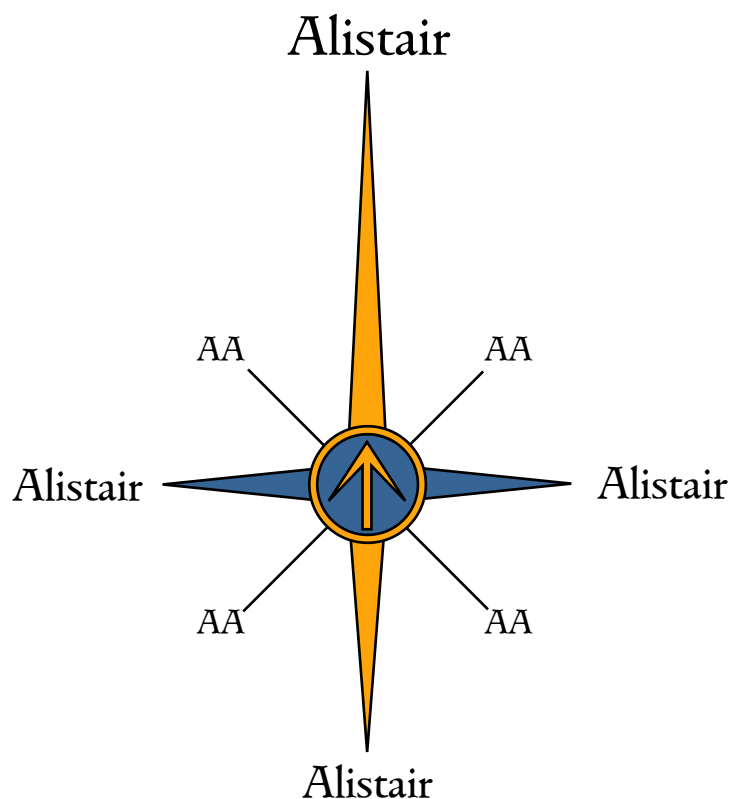
Monday of 6th: Amazing Feats of Wonder, Oriel College, 7.30.

Monday of 7th: Assassinate! Meet in the Mitre, 7.30.

Monday of 8th: TGM and Termly Dinner. TBC, 7pm.

Navigational Amendment

All OUSGGers are hereby notified of the following alterations to the points of the compass, effective immediately.



Other Events

Saturday of 6th Week: Thinking Day Bar Crawl. Meet at the Turf, 7pm.

For full details of upcoming meetings and events, visit our website at www.ousgg.org.uk.